

(SEE PAGE 3 FOR FIELD TRANSFORMER WIRING)

(SEE PAGE 2 FOR FIELD CONTROL WIRING)

MATERIAL: \*\*\*\*\*  
 FINISH: \*\*\*\*

NOTE:  
 \* 1. FACTORY JUMPER WIRES INSTALLED FOR FAIL-SAFE MODELS ONLY. FAIL-SAFE MECHANISM PLATE REQUIRED.

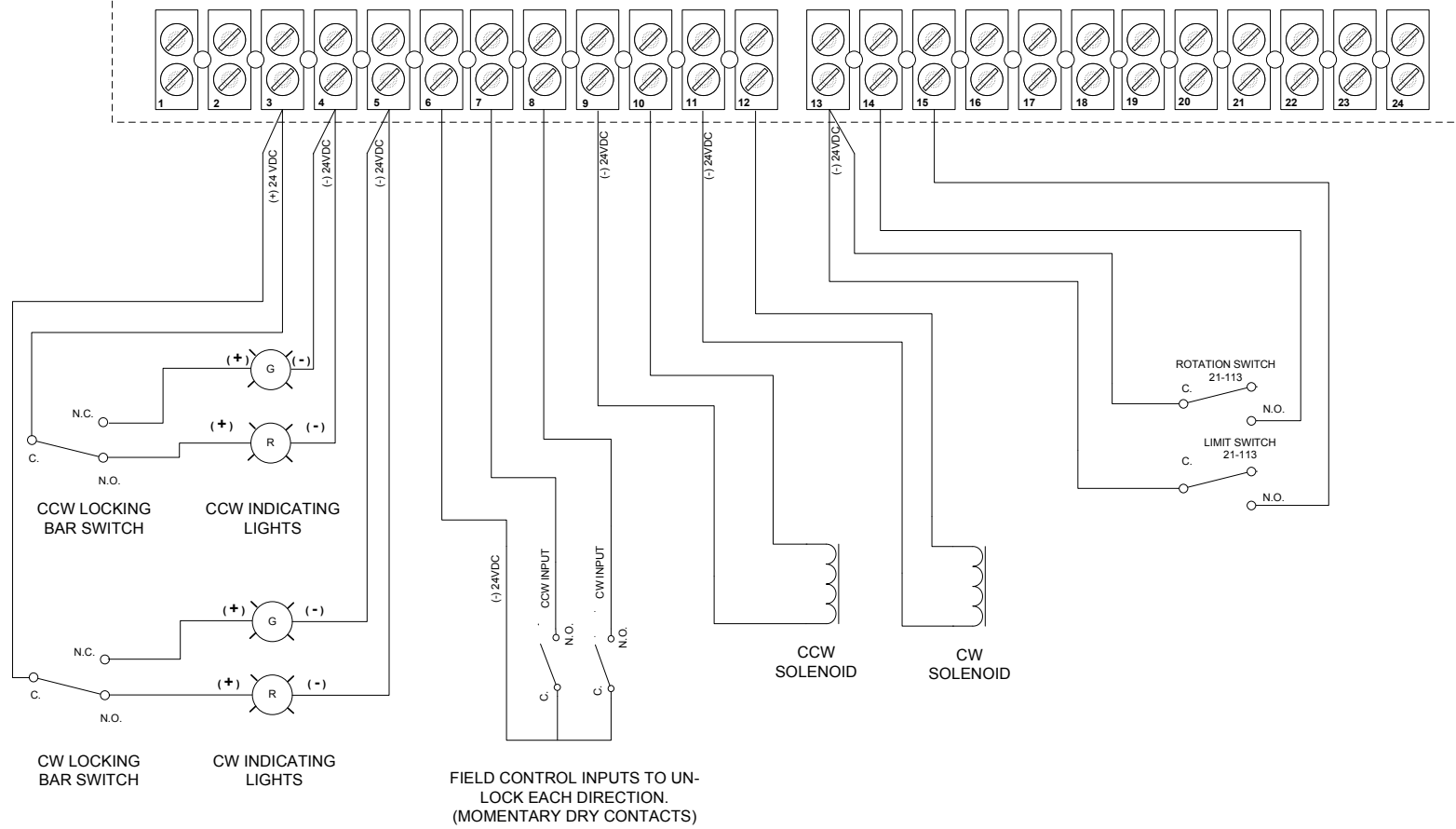
REVISIONS			
REV.	DESCRIPTION	BY	DATE
1	CHANGED PLC TO SHOW "NOT CONNECTED" TERMINALS.	GLS	12/14/99
2	ADDED 1N4007 DIODE FOR SOLENOID	GLS	03/21/2000
3	RE-ORIENTED PLC HORIZONTALLY FROM VERTICAL.	GLS	11/30/2000

ALL DIMENSIONS ARE IN INCHES UNLESS SPECIFIED  
 TOLERANCE UNLESS SPECIFIED  
 0.0 ± 0.060  
 0.00 ± 0.030  
 0.000 ± 0.015  
 0.0000 ± 0.005  
 ANGULAR ± 0.5°  
 DRAWN BY/DATE: GLS 06/25/99  
 CHECKED BY/DATE: GVB 06/25/99

PHILIPS ACCESS CONTROL HARDWARE DIVISION  
 7041 ORCHARD, DEARBORN, MI. 48126

DRAWING TITLE:  
**WIRING DIAGRAM - CONTROL PANEL - PLC CONVERSION KIT**

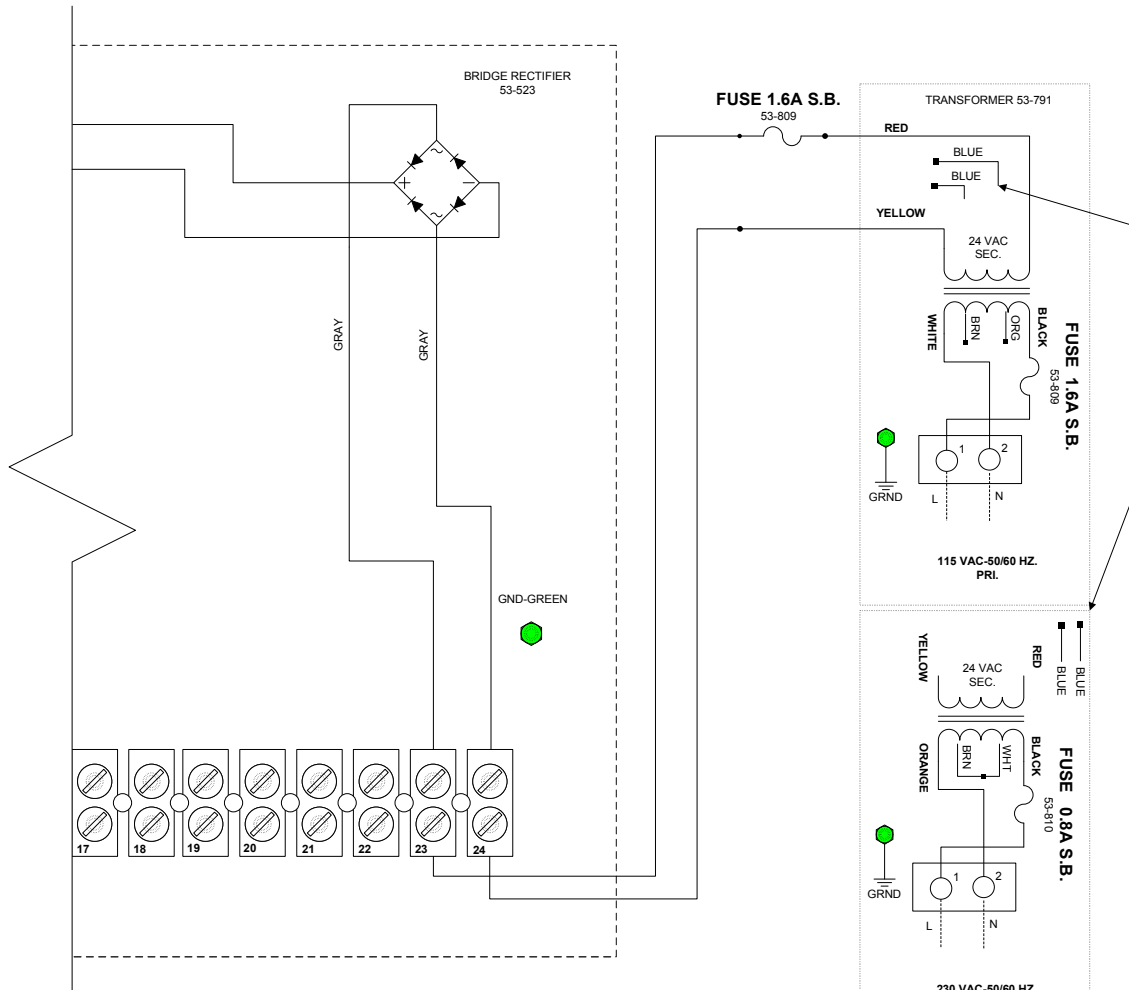
SIZE: A	MODEL: ST	DRAWING NUMBER: 73-102	REV: 3
---------	-----------	------------------------	--------



MATERIAL: \*\*\*\*\*

FINISH: \*\*\*\*

REVISIONS				ALL DIMENSIONS ARE IN INCHES UNLESS SPECIFIED	PHILIPS ACCESS CONTROL HARDWARE DIVISION 7041 ORCHARD, DEARBORN, MI. 48126
REV.	DESCRIPTION	BY	DATE		
1	(SEE PAGE 1).	GLS	12/14/99	TOLERANCE UNLESS SPECIFIED 0.0 ± 0.060 0.00 ± 0.030 0.000 ± 0.015 0.0000 ± 0.005 ANGULAR ± 0.5°	DRAWING TITLE: <b>FIELD CONTROL WIRING - PLC CONVERSION KIT</b>
2	(SEE PAGE 1).	GLS	03/21/2000		
3	(SEE PAGE 1).	GLS	11/30/2000		
				DRAWN BY/DATE: GLS 06/25/99	SIZE: MODEL: DRAWING NUMBER: REV:
				CHECKED BY/DATE: GVB 06/25/99	<b>A</b> ST <b>73-102</b> <b>3</b>
THESE DRAWINGS & SPECIFICATIONS ARE THE PROPERTY OF AND PROPRIETARY TO PHILIPS INDUSTRIES, INC. AND ARE NOT TO BE DISCLOSED, REPRODUCED, COPIED OR USED AS THE BASIS OF MANUFACTURE OR SALE OF APPARATUS AND/OR DEVICES, OR OTHERWISE WITHOUT PHILIPS' PRIOR WRITTEN CONSENT.				SCALE: # : #	ASSEMBLY 86-289 SHEET: 2 OF 3



**IMPORTANT !**  
CAP-OFF BLUE 12VAC WIRES WITH WIRE NUTS.  
(NOT USED).

MATERIAL: \*\*\*\*\*

FINISH: \*\*\*\*

**REVISIONS**

REV.	DESCRIPTION	BY	DATE
1	(SEE PAGE 1).	GLS	12/14/99
2	(SEE PAGE 1).	GLS	03/21/2000
3	(SEE PAGE 1).	GLS	11/30/2000

ALL DIMENSIONS ARE IN INCHES UNLESS SPECIFIED

TOLERANCE UNLESS SPECIFIED

- 0.0 ± 0.060
- 0.00 ± 0.030
- 0.000 ± 0.015
- 0.0000 ± 0.005
- ANGULAR ± 0.5°

DRAWN BY/DATE: GLS 06/25/99

CHECKED BY/DATE: GVB 06/25/99



**PHILIPS**

ACCESS CONTROL HARDWARE DIVISION  
7041 ORCHARD, DEARBORN, MI. 48126

DRAWING TITLE: <b>WIRING DIAGRAM - TRANSFORMER FIELD WIRING - PLC CONVERSION KIT</b>			
SIZE: <b>A</b>	MODEL: <b>ST</b>	DRAWING NUMBER: <b>73-102</b>	REV: <b>3</b>
SCALE: <b># : #</b>	ASSEMBLY: <b>86-289</b>	SHEET: <b>3 OF 3</b>	

THESE DRAWINGS & SPECIFICATIONS ARE THE PROPERTY OF AND PROPRIETARY TO PHILIPS INDUSTRIES, INC. AND ARE NOT TO BE DISCLOSED, REPRODUCED, COPIED OR USED AS THE BASIS OF MANUFACTURE OR SALE OF APPARATUS AND/OR DEVICES, OR OTHERWISE WITHOUT PHILIPS' PRIOR WRITTEN CONSENT.